

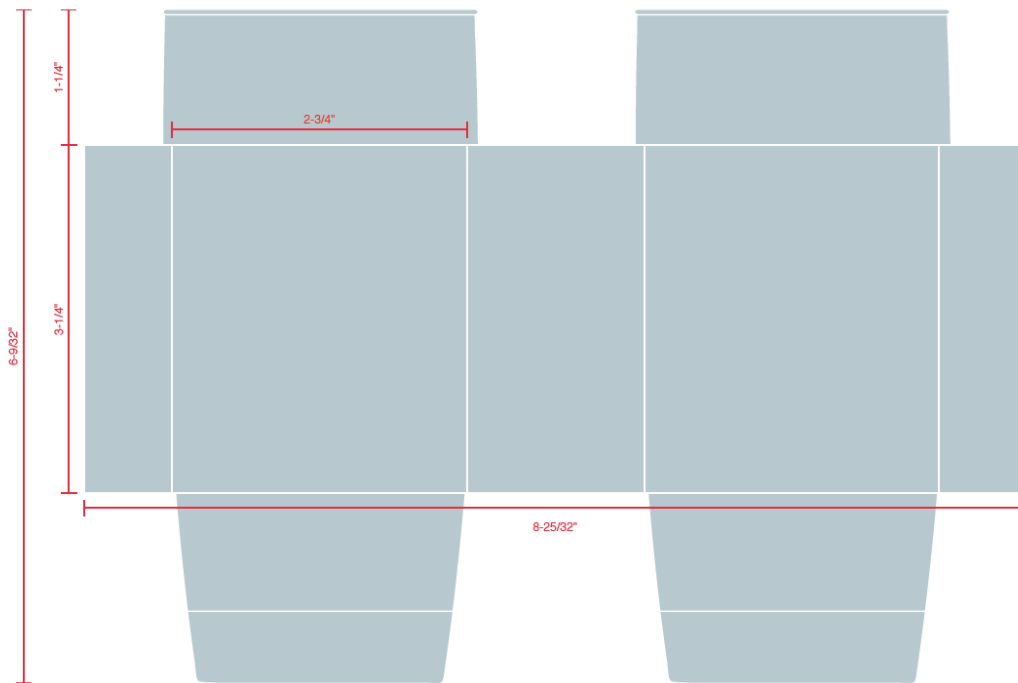


ARTWORK SPECS

Artwork should include no more than 4 total colors (no gradients).

Size of the artwork should be no more than 3-1/4" tall and no more than 8-25/32" wide.

When creating your design, please note that when viewing the glass, the face is 2-3/4" wide.



- Design must include the Guild's "[Drink Indiana Beer](#)" logo in one solid color as well as make reference to "Brewers of Indiana Guild"
- Artwork should be submitted in a vector file format (.ai, .eps, .pdf) created in Adobe Illustrator
- Artists are encouraged to be as creative as possible, keeping in mind that glassware will be distributed by Indiana breweries all across the state
- Artists are permitted to submit (1) entry per person
- Liquor laws prohibit us from featuring any images depicting smoking or drugs, so please refrain from using.
- Artwork must not contain obscene, provocative, defamatory, sexually explicit or otherwise objectionable or inappropriate content.
- The contest is open to Indiana artists who are 21+ years of age
- Artists will maintain the rights to their work, but by submitting and entry, grant the Brewers of Indiana Guild the rights to feature the submitted art on the glassware described in this contest